



Clayton Landfill Gas Power Station

EDL owns and operates the 12MW Clayton Landfill Gas Power Station, which occupies the former sand quarries at Clayton in Victoria. The landfill site is completely filled and closed.

At a glance

Owner, operator:
EDL

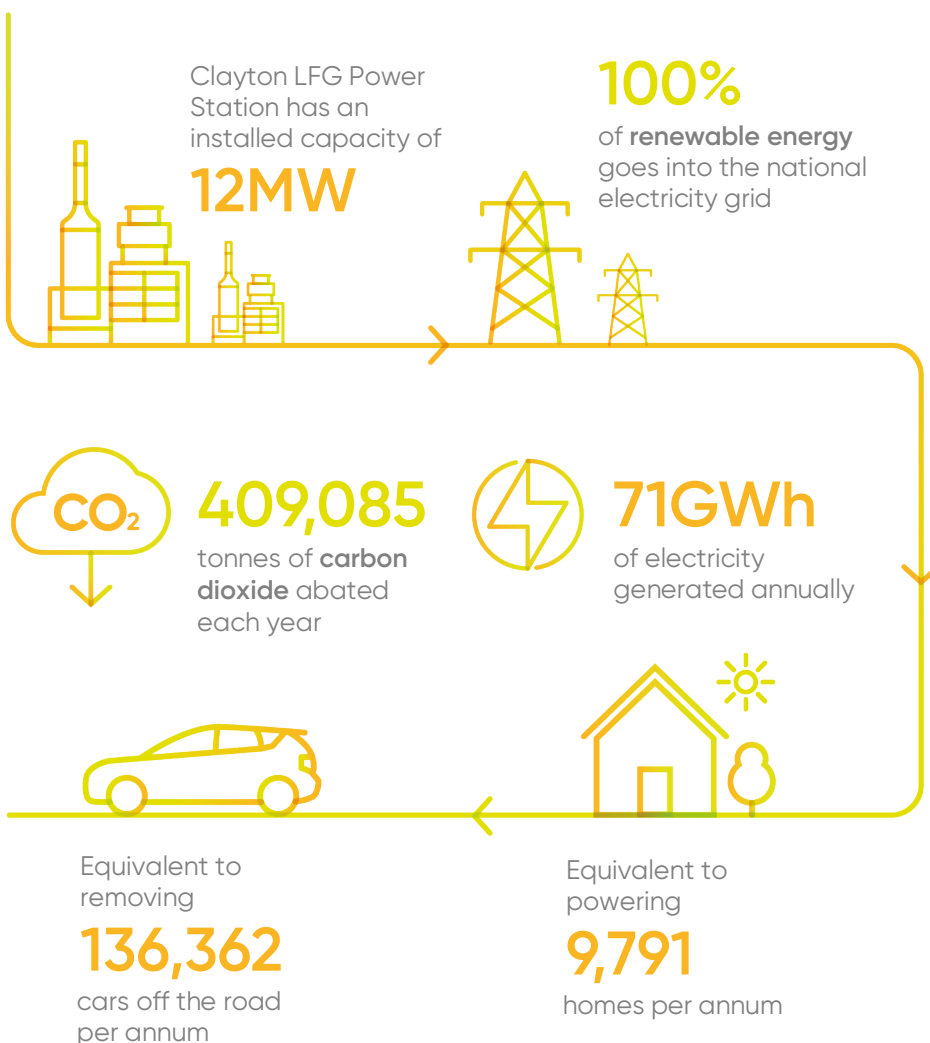
Customer:
Cleanaway

Location:
Clayton, VIC, Australia

Installed capacity:
12MW

Primary fuel:
Landfill gas

Start of operations:
1995



About the power station

EDL operates the Clayton Landfill Gas Power Station with 11 Jenbacher 320 generator engines and one Caterpillar generator engine with a total capacity of 12MW.

As part of site operations, EDL performs the installation of gas collection systems, wellfield operation and maintenance.

About landfill gas (LFG)

LFG is generated from decomposing organic matter in refuse tips. It mostly consists of methane, carbon dioxide and organic compounds. This LFG would otherwise be released to the atmosphere or flared. Instead, EDL converts LFG to electricity, significantly reducing carbon emissions.



Clayton Landfill Gas Power Station



EDL owns and operates a global portfolio of power stations in Australia, North America and Europe.

We are committed to energy diversity and providing innovative, sustainable solutions to meet and exceed customer needs.



Renewables



Waste coal mine gas



Remote energy



LNG/CNG



Landfill gas



Renewable natural gas

**A world of
new energy**

Head office
Waterfront Place
Level 6, 1 Eagle Street
Brisbane QLD 4000

+61 7 3275 5555
enquiries@edlenergy.com
edlenergy.com

Our offices
Australia
North America
Europe