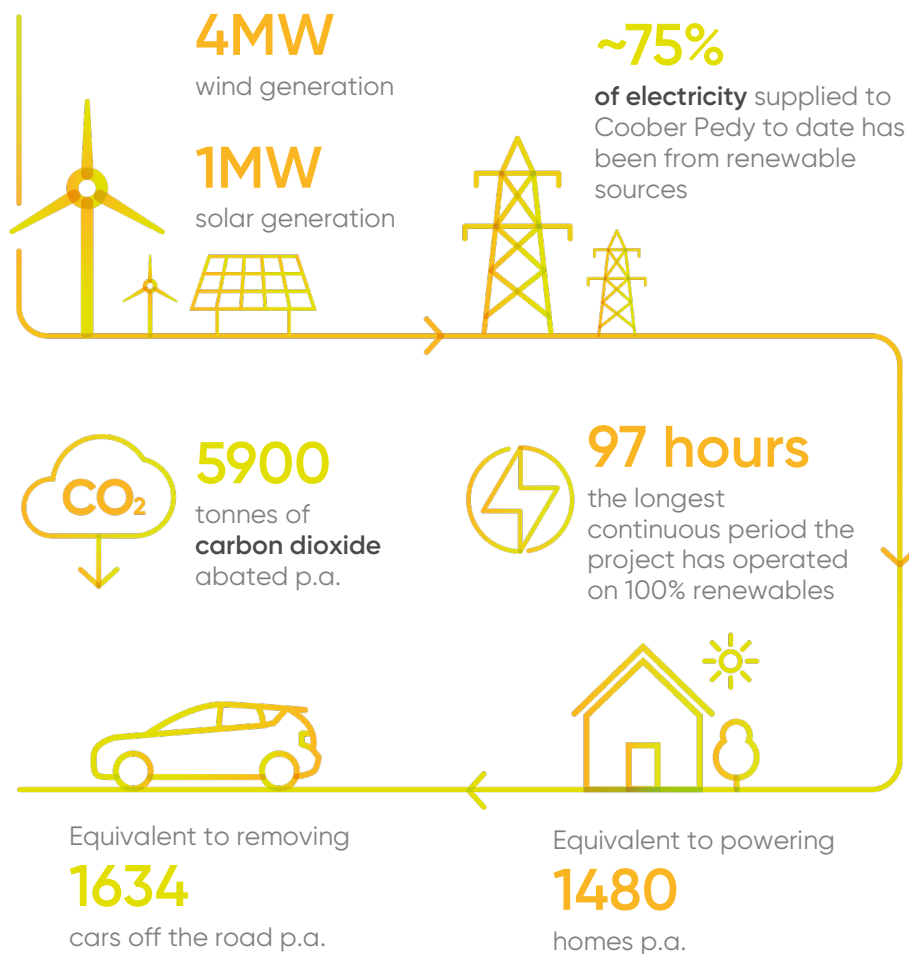




Coober Pedy Hybrid Renewable Project

EDL owns and operates the Coober Pedy Hybrid Renewable Project, which provides electricity to the iconic, remote mining town of Coober Pedy in South Australia.



At a glance

Project name
Coober Pedy Hybrid Renewable Project

Owner/operator
EDL

Location
Coober Pedy,
South Australia, Australia

Primary fuel
Hybrid

Start of operation
2017



About the hybrid project

Supported by the Australian Renewable Energy Agency (ARENA), the Coober Pedy Hybrid Renewable Project combines 4MW wind generation, 1MW solar generation, a 1MW/500kWhr battery with other technologies integrating these with the diesel power station.

This multiple award-winning project has delivered lower cost and more stable electricity for the community at world-leading renewable energy penetration rates. To date, the longest continuous period the project has operated on 100% renewables was 97 hours in December 2019.

Coober Pedy Community Fund

Facilitated by the Coober Pedy District Council, this Fund provides support for community events and activities in the Coober Pedy township and demonstrates the continued strength of the partnership between Council and EDL.

This project has set a global benchmark for renewables in MW scale isolated grids.



Coober Pedy Power Station



Coober Pedy solar and wind farm

EDL owns and operates a global portfolio of power stations in Australia, North America and Europe.

We are committed to energy diversity and providing innovative, sustainable solutions to meet and exceed customer needs.



Renewables



LNG/CNG



Waste coal
mine gas



Landfill
gas



Remote
energy

A world of
new energy

Head office
Waterfront Place
Level 6, 1 Eagle Street
Brisbane QLD 4000

+61 7 3541 3000
enquiries@edlenergy.com
edlenergy.com

Our operations
Australia
North America
Europe