



German Creek Power Station

EDL owns and operates the 45MW German Creek Power Station, which captures and combusts waste coal mine gas and converts it to electricity for the national electricity market.

At a glance

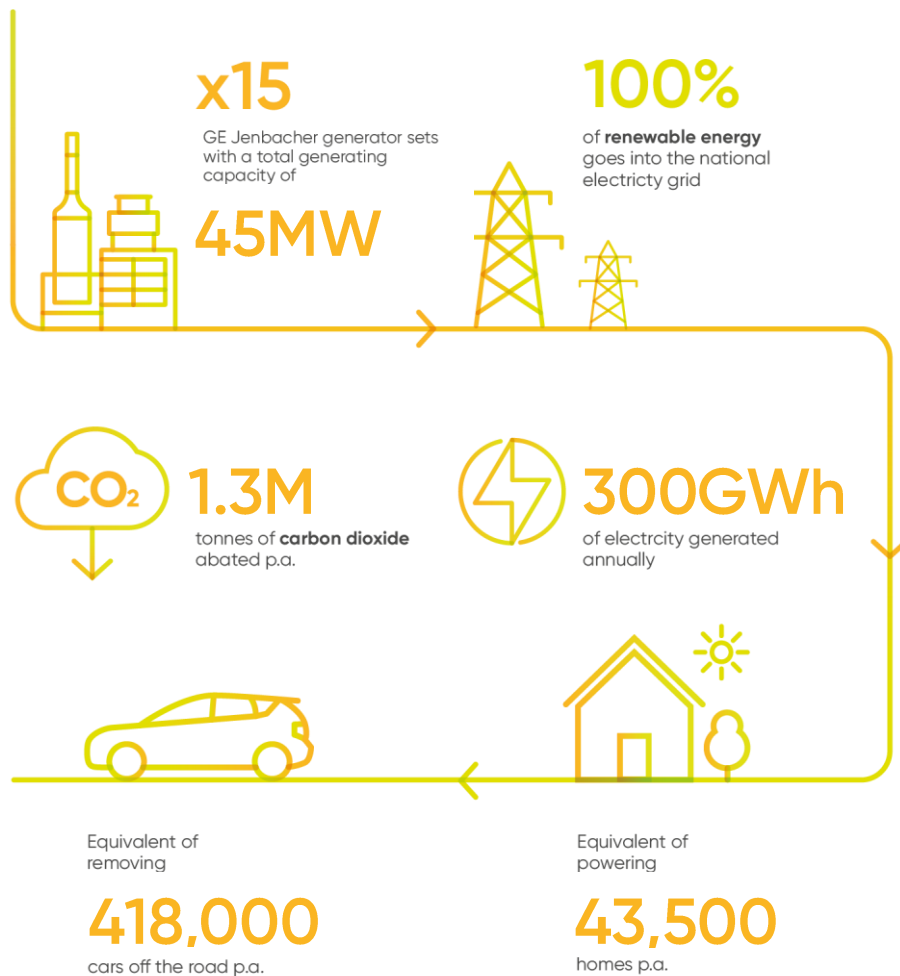
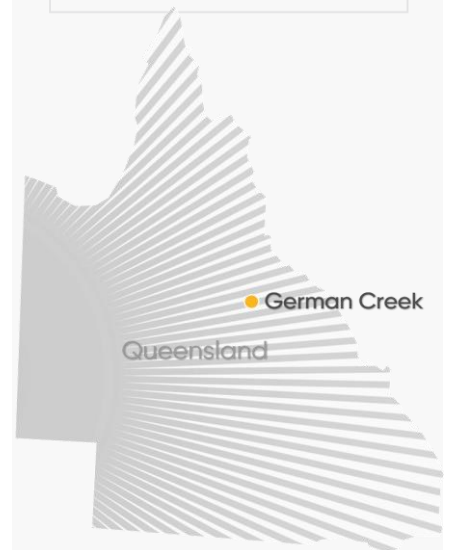
Power station name:
German Creek Power Station

Owner/operator:
EDL

Location:
200km west of Rockhampton,
Queensland Australia

Primary fuel:
Waste coal mine gas

Start of operation:
2006



About the WCMG power station

EDL pioneered the process of capturing and converting waste coal mine gas (WCMG) generated during coal mining in Australia.

WCMG is produced during coal mining as methane gas trapped in coal seams is released. As this product can be a safety hazard and a challenge to mining operations, it is extracted by mine ventilation and coal seam drainage.

Historically a waste product that is vented or flared, the extracted methane is used by EDL as a power generation fuel—delivering reliable, sustainable and affordable energy and significantly reducing greenhouse gas emissions.

The power station consists of sixteen 2MW power generation modules using Caterpillar 3520C generator sets and four 3.3MW power generating modules using Jenbacher J620 generator sets.



2MW power generation modules

EDL owns and operates a global portfolio of power stations in Australia, North America and Europe.

We are committed to energy diversity and providing innovative, sustainable solutions to meet and exceed customer needs.



Renewables



LNG/CNG



Waste coal mine gas



Landfill gas



Remote energy