



# Rainham Landfill Gas Power Station

EDL owns and operates the Rainham Landfill Gas Power Station located in Essex near the town of Dagenham, in the UK, with a capacity of 17.8MW.

## At a glance

**Project name:**  
Rainham Landfill Gas Power Station

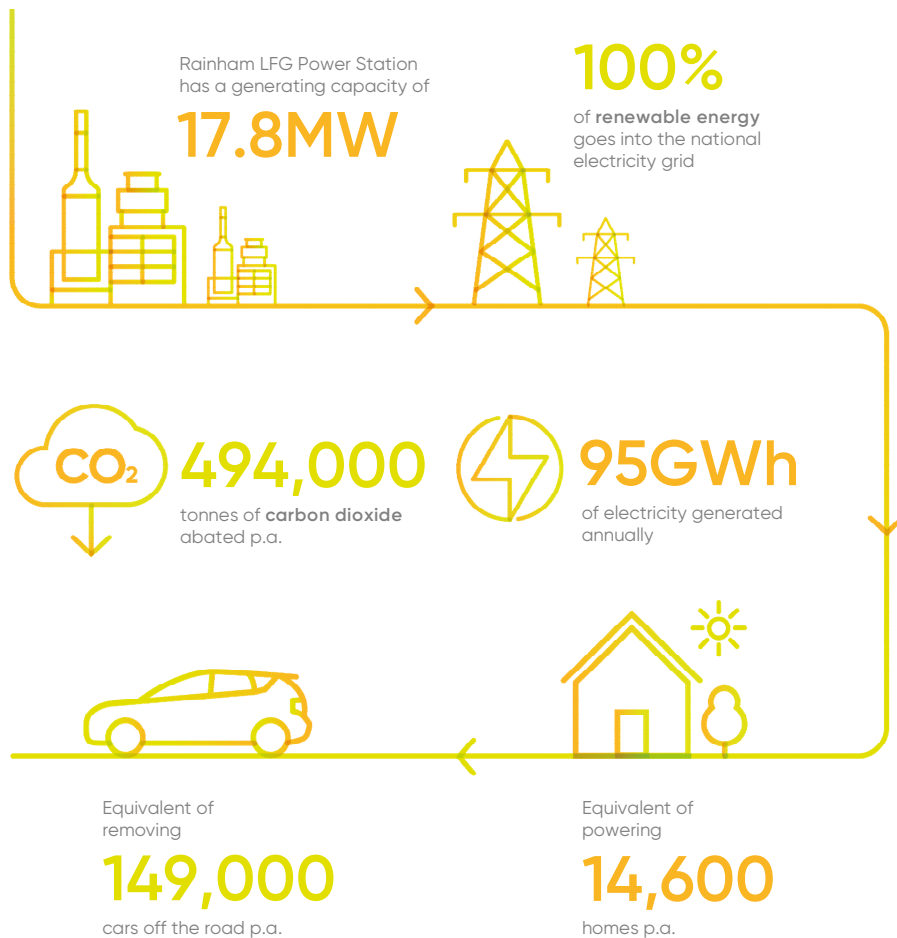
**Owner/operator:**  
EDL

**Location:**  
Essex, England

**Primary fuel:**  
Landfill gas

**Start of operation:**  
2001

**Generating capacity:**  
17.8MW



## About the LFG power station

Commissioned in 2001, Rainham landfill is a major refuse receptacle for the city of London, greater London and environs.

The power station comprises eight 1.25MW, three 1.4MW, two 1.1MW and one 1MW reciprocating genset and associated infrastructure.

EDL undertakes installation of the gas collection systems as well as providing the wellfield operation and maintenance.

The site is expected to produce LFG for electricity generation beyond 2030.



Rainham Landfill Gas Power Station

**EDL owns and operates a global portfolio of power stations in Australia, North America and Europe.**

We are committed to energy diversity and providing innovative, sustainable solutions to meet and exceed customer needs.



**Renewables**



**LNG/CNG**



**Waste coal mine gas**



**Landfill gas**



**Remote energy**

**A world of  
new energy**

**Head office**  
Waterfront Place  
Level 6, 1 Eagle Street  
Brisbane QLD 4000 Australia

+61 7 3275 5555  
[enquiries@edlenergy.com](mailto:enquiries@edlenergy.com)  
[edlenergy.com](http://edlenergy.com)

**Our offices**  
Australia  
North America  
Europe