



Pitsea Landfill Gas Power Station

EDL owns and operates the Pitsea Landfill gas power station, one of the oldest landfill sites in the UK, with a capacity of 16.2MW.

At a glance

Power station name:
Pitsea Landfill Gas Power Station

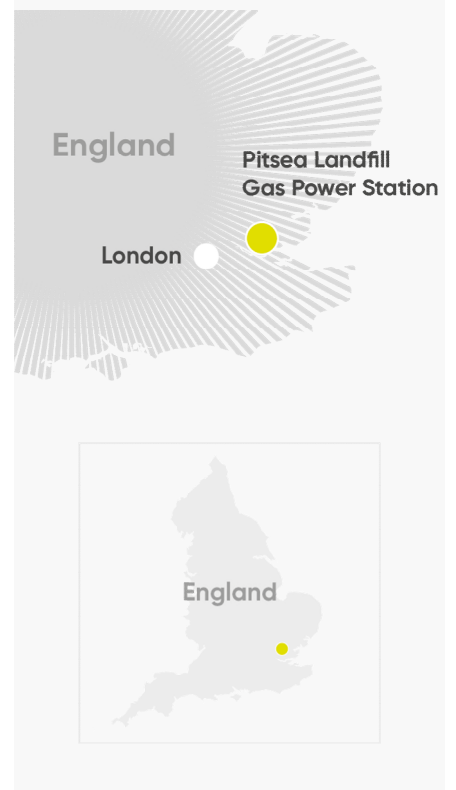
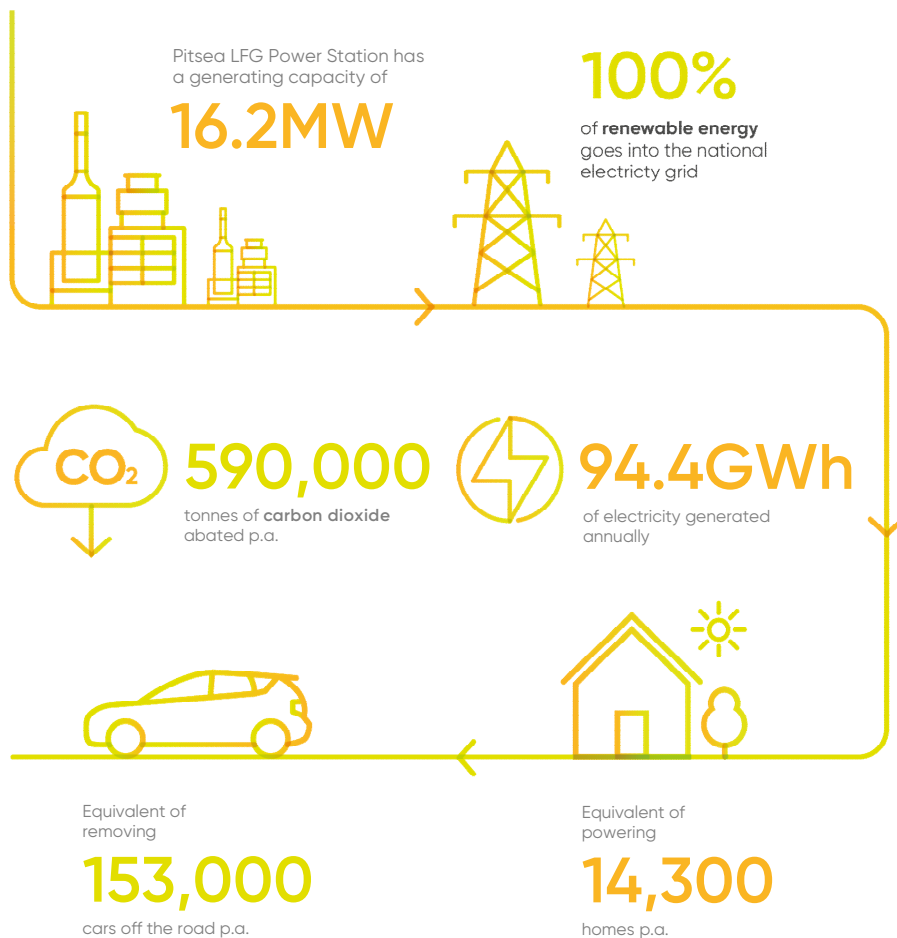
Owner/operator:
EDL

Location:
51km east of London, England

Primary fuel:
Landfill gas

Start of operation:
2001

Generating capacity:
16.2MW



About the power station

With records dating back to 1906, Pitsea was one of the largest landfill sites in the UK at its peak, taking large volumes of waste from London and the home counties.

Often described as the perfect design for a large scale LFG power station, EDL is currently replenishing the fleet of LFG engines to maximise the environmental and financial sustainability of the site.

Now a renowned wildlife reserve, Pitsea boasts wetland habitats for birds, bee colonies and one of the largest fox habitats in the country.



Pitsea Landfill Gas Power Station

EDL owns and operates a global portfolio of power stations in Australia, North America and Europe.

We are committed to energy diversity and providing innovative, sustainable solutions to meet and exceed customer needs.



Renewables



LNG/CNG



Waste coal mine gas



Landfill gas



Remote energy

**A world of
new energy**

Head office
Waterfront Place
Level 6, 1 Eagle Street
Brisbane QLD 4000 Australia

+61 7 3275 5555
enquiries@edlenergy.com
edlenergy.com

Our offices
Australia
North America
Europe