



# Pitsea Landfill Gas Power Station

EDL owns and operates the Pitsea Landfill gas power station, one of the oldest landfill sites in the UK, with a capacity of 16MW.

## At a glance

**Power station name:**  
Pitsea Landfill Gas Power Station

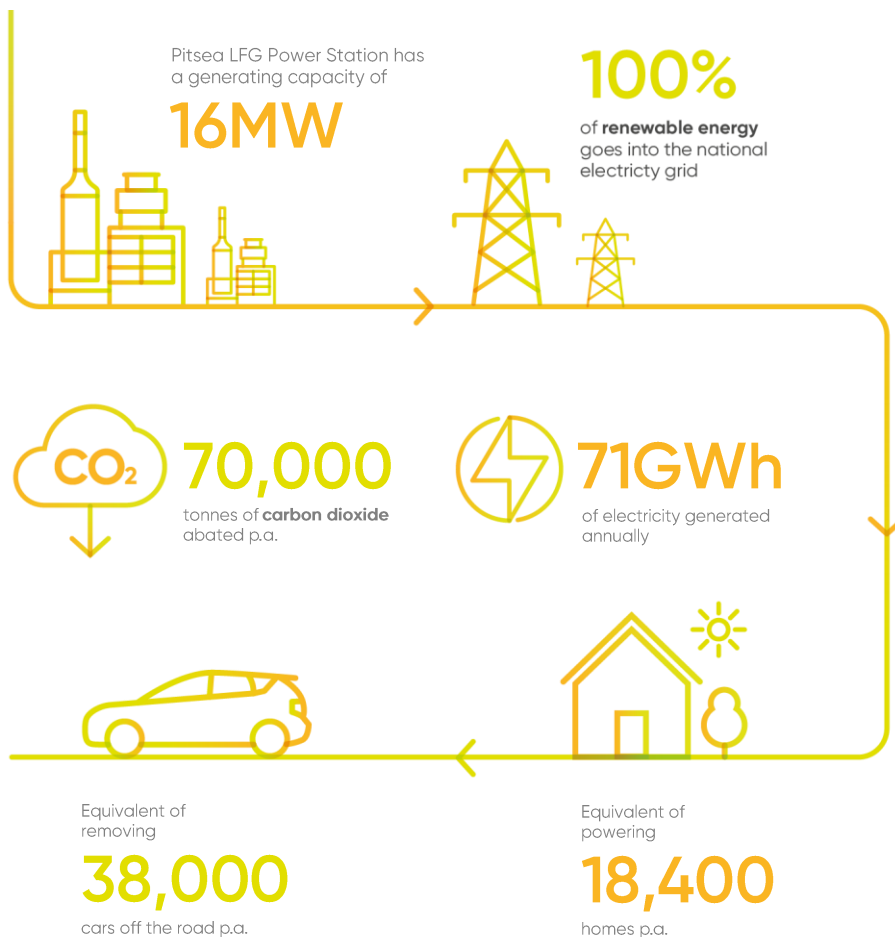
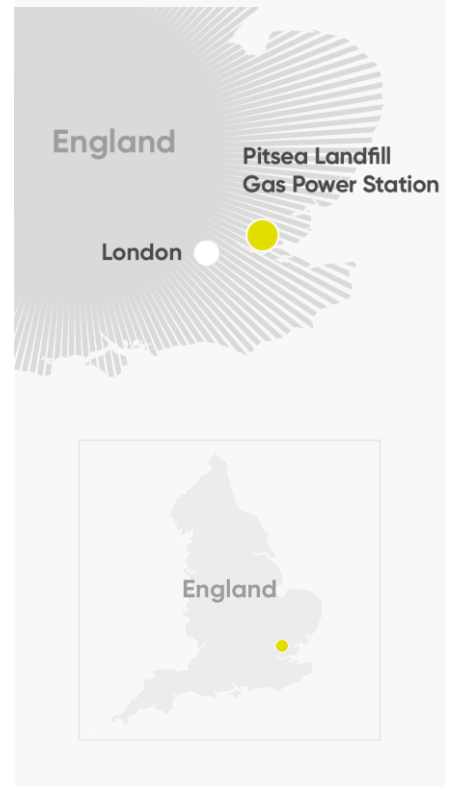
**Owner/operator:**  
EDL

**Location:**  
51km east of London, England

**Primary fuel:**  
Landfill gas

**Start of operation:**  
2001

**Generating capacity:**  
16MW



# About the power station

With records dating back to 1906, Pitsea was one of the largest landfill sites in the UK at its peak, taking large volumes of waste from London and the home counties.

Often described as the perfect design for a large scale LFG power station, EDL is currently replenishing the fleet of LFG engines to maximise the environmental and financial sustainability of the site.

Now a renowned wildlife reserve, Pitsea boasts wetland habitats for birds, bee colonies and one of the largest fox habitats in the country.



Pitsea Landfill Gas Power Station



Pitsea Landfill Gas Power Station

**EDL owns and operates a global portfolio of power stations in Australia, North America and Europe.**

We are committed to energy diversity and providing innovative, sustainable solutions to meet and exceed customer needs.



Renewables



LNG/CNG



Waste coal mine gas



Landfill gas



Remote energy