



Lucas Heights I & II Power Station

Landfill gas sector leader EDL owns and operates the 19.3MW Lucas Heights I and II Power Station, which processes landfill gas (LFG) from refuse into saleable electricity, reducing methane emissions.

At a glance

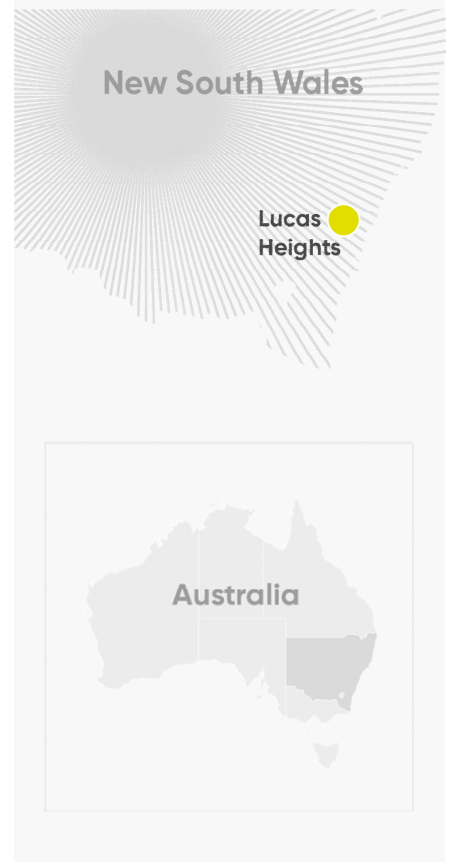
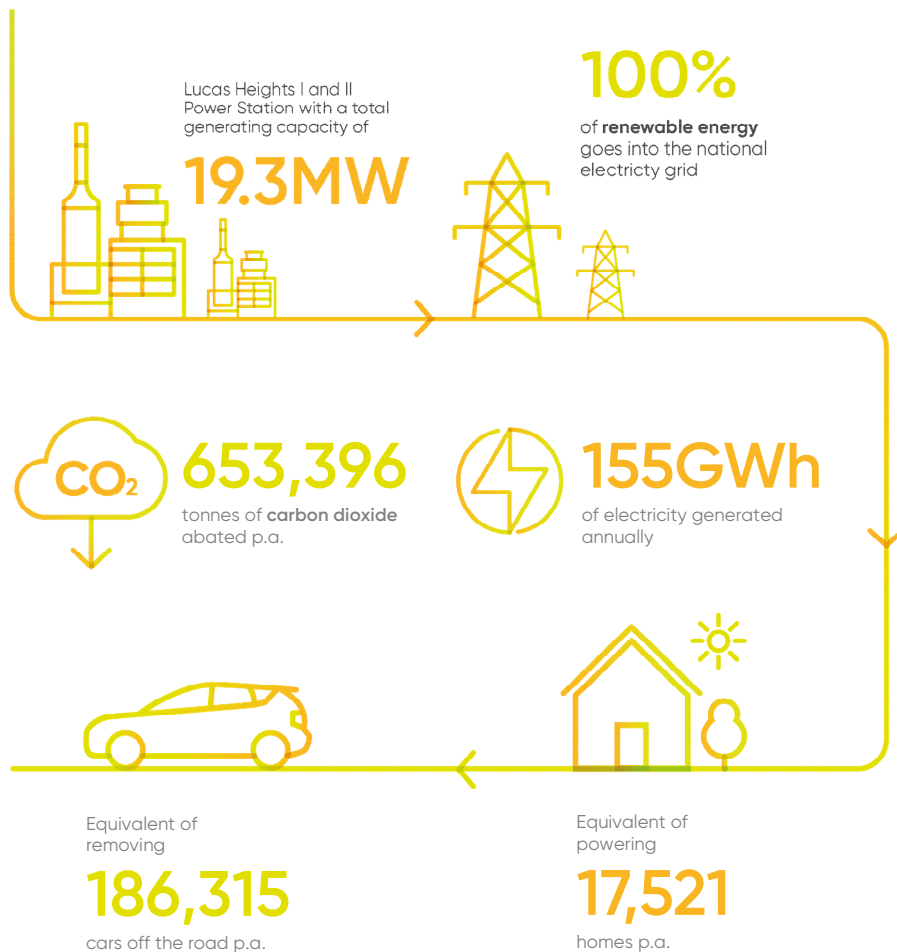
Power station name:
Lucas Heights I and II Power Station

Owner/operator:
EDL

Location:
40km south west of Sydney, New South Wales, Australia

Primary fuel:
Landfill gas

Start of operation:
1998



About the LFG station

EDL is a global leader in the operation of landfill gas (LFG) powered stations across Australia, Europe and North America.

In Australia, EDL has led the landfill gas sector, pioneering technology at Lucas Heights for several decades.

LFG is generated from decomposing organic matter in refuse tips. It mostly consists of methane, carbon dioxide and organic compounds. This gas would otherwise be released to the atmosphere or flared. Instead, EDL converts the gas to electricity, significantly reducing carbon emissions.

The power station is capable of generating approximately **155 gigawatt hours (GWh)** of electricity annually, which is enough to power approximately **17,521 homes**.



Lucas Heights II Power Station



Lucas Heights landfill gas collection station

EDL owns and operates a global portfolio of power stations in Australia, North America and Europe.

We are committed to energy diversity and providing innovative, sustainable solutions to meet and exceed customer needs.



Renewables



LNG/CNG



Waste coal mine gas



Landfill gas



Remote energy

A world of new energy

Head office
Waterfront Place
Level 6, 1 Eagle Street
Brisbane QLD 4000 Australia

+61 7 3275 5555
enquiries@edlenergy.com
edlenergy.com

Our offices
Australia
North America
Europe