



Lidya Energie Power Station

EDL owns and operates the 11MW Lidya Energie Power Station, one of the largest of its kind in Canada, which captures landfill gas generated at the Lachute Sanitary Landfill and converts it into green energy.

At a glance

Power station name:
Lidya Energie

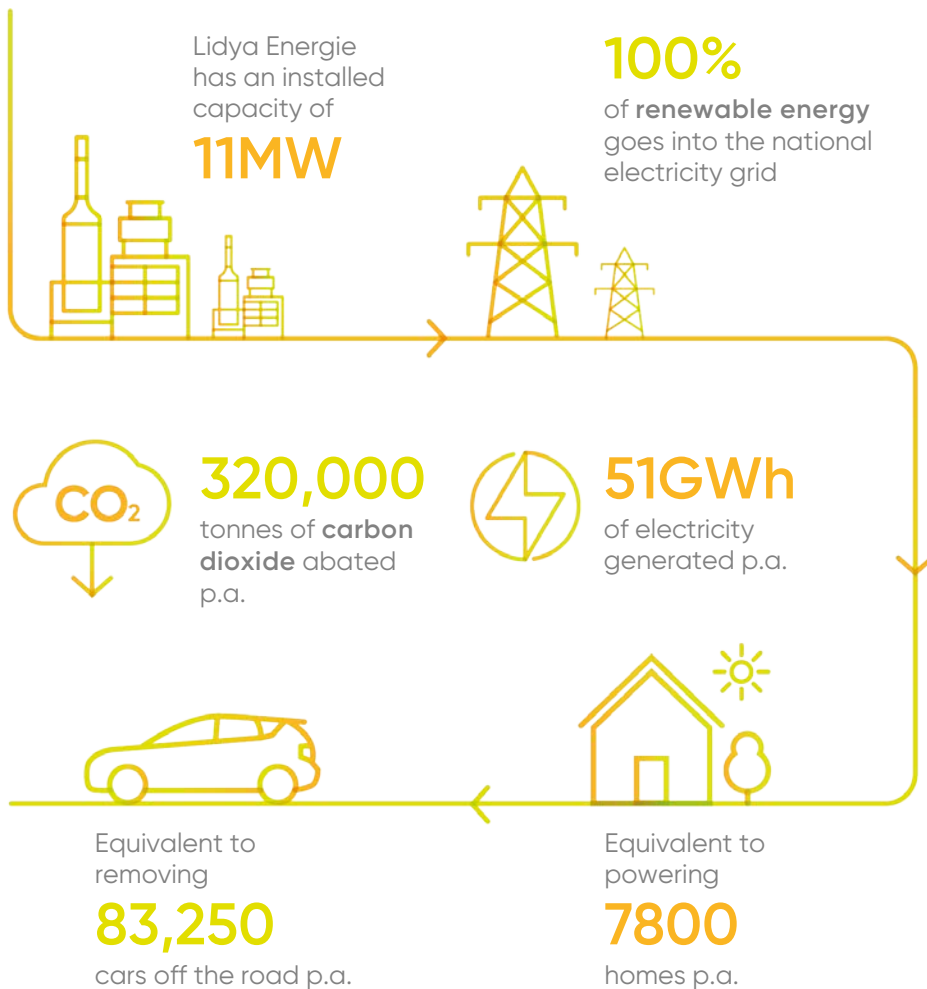
Owner/operator:
EDL

Location:
North west of Montreal, Canada

Primary fuel:
Landfill gas

Start of operation:
2007 (acquired by EDL in 2017)

Production:
51GWh p.a.



About the landfill gas station

Situated just north west of Montreal, within the French-speaking town of Lachute's municipal boundaries, Lidya Energie is one of the largest of its kind in Canada and the first Canadian project for EDL.

The site is equipped with seven 1.6MW G3520c Caterpillar internal combustion engines fueled by biogas from the landfill, all located in a single building.

The landfill gas is pre-treated with a sulphur and siloxane removal system before being used for fuel in the engines.



Lidya Energie Power Station

EDL owns and operates a global portfolio of power stations in Australia, North America and Europe.

We are committed to energy diversity and providing innovative, sustainable solutions to meet and exceed customer needs.



Renewables



LNG/CNG



Waste coal mine gas



Landfill gas



Remote energy