



Cullerin Range Wind Farm

EDL owns and operates the Cullerin Range Wind Farm located near Gunning in New South Wales, capturing wind energy with a total capacity of 30MW.

At a glance

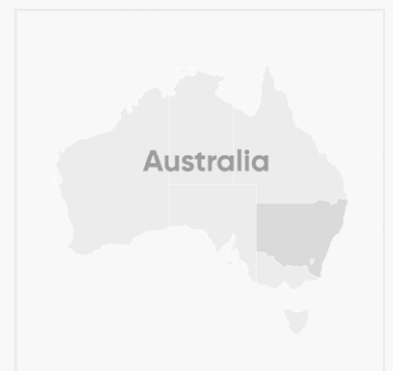
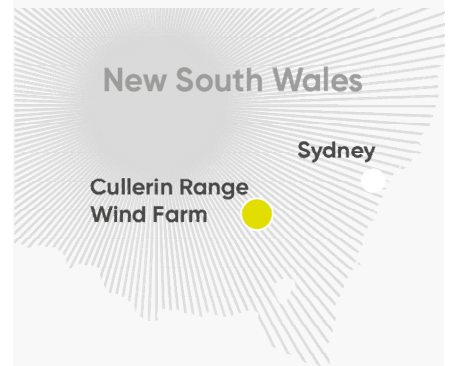
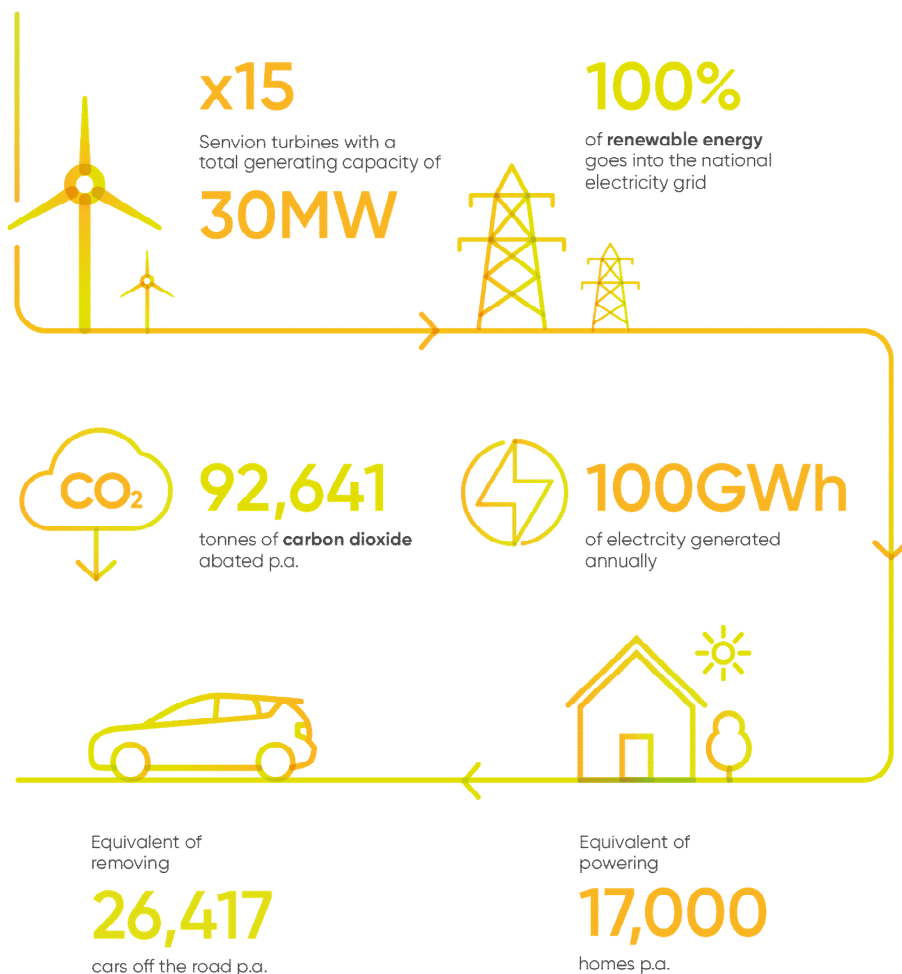
Project name:
Cullerin Range Wind Farm

Owner/operator:
EDL

Location:
Gunning, New South Wales, Australia

Primary fuel:
Wind

Start of operation:
2009



About the wind farm

The Cullerin Range was chosen as the location for the wind farm as it has a consistent wind resource, is close to transmission lines and has safe access for construction and maintenance vehicles.

The power station comprises 15 Senvion turbines, each on a tower 80m high, and each rated at a maximum output of 2MW (2 million watts could power twenty thousand 100W light bulbs).

The environmental benefit from the Cullerin Range Wind Farm is equivalent to taking approximately 26,000 cars off the road.

The power station is capable of generating approximately **100 gigawatt hours (GWh)** of electricity annually, which is enough to power approximately **17,000 homes**.

Construction

Constructed in 2007-2008, from July 2009 the plant became the first significant wind farm in NSW to be fully operational in the National Electricity Market.

Being located on working farms, the Cullerin Wind Farm operates among traditional farming activities with landowners grazing sheep underneath the turbine towers.



Cullerin Range Wind Farm



Cullerin Range Wind Farm

EDL owns and operates a global portfolio of power stations in Australia, North America and Europe.

We are committed to energy diversity and providing innovative, sustainable solutions to meet and exceed customer needs.



Renewables



LNG/CNG



Waste coal mine gas



Landfill gas



Remote energy