



# Coober Pedy Renewable Hybrid Project

EDL owns and operates the Coober Pedy Renewable Hybrid Project, which provides electricity to the iconic, remote mining town of Coober Pedy in South Australia.

## At a glance

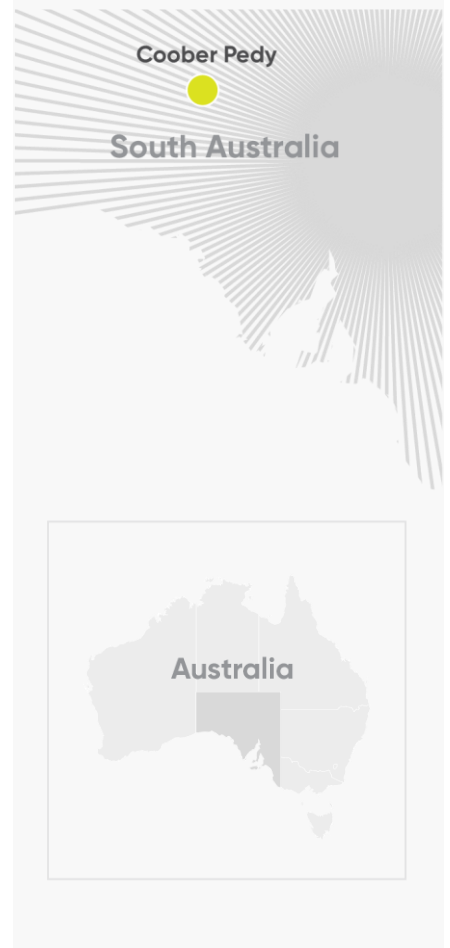
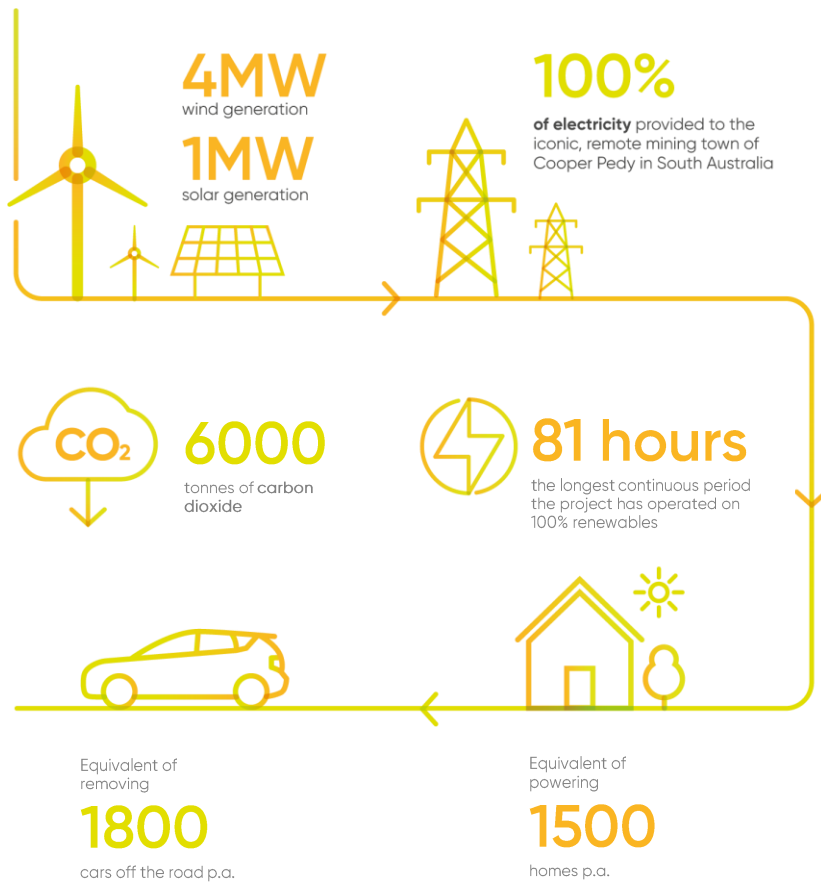
**Project name:**  
Coober Pedy Renewable Hybrid Project

**Owner/operator:**  
EDL

**Location:**  
Coober Pedy,  
South Australia, Australia

**Primary fuel:**  
Hybrid

**Start of operation:**  
2017



# About the hybrid project

Supported by the Australian Renewable Energy Agency (ARENA), the Coober Pedy Renewable Hybrid Project combines 4MW wind generation, 1MW solar generation, a 1MW/500kWhr battery with other technologies integrating these with the diesel power station.

This hybrid project has delivered lower cost and more stable electricity for this community at world-leading renewable energy penetration rates. To the end of 2018, the longest continuous period the project has operated on 100% renewables is 81 hours.

This project has set a global benchmark for renewables in MW scale isolated grids.



Coober Pedy Power Station



Coober Pedy solar and wind farm



EDL owns and operates a global portfolio of power stations in Australia, North America and Europe.

We are committed to energy diversity and providing innovative, sustainable solutions to meet and exceed customer needs.



Renewables



LNG/CNG



Waste coal mine gas



Landfill gas



Remote energy