



Brent Run Generating Station

EDL owns and operates the Brent Run landfill gas power station in Montrose, Michigan, which supplies renewable energy 24 hours a day, 365 days per year.

At a glance

Power station name:
Brent Run

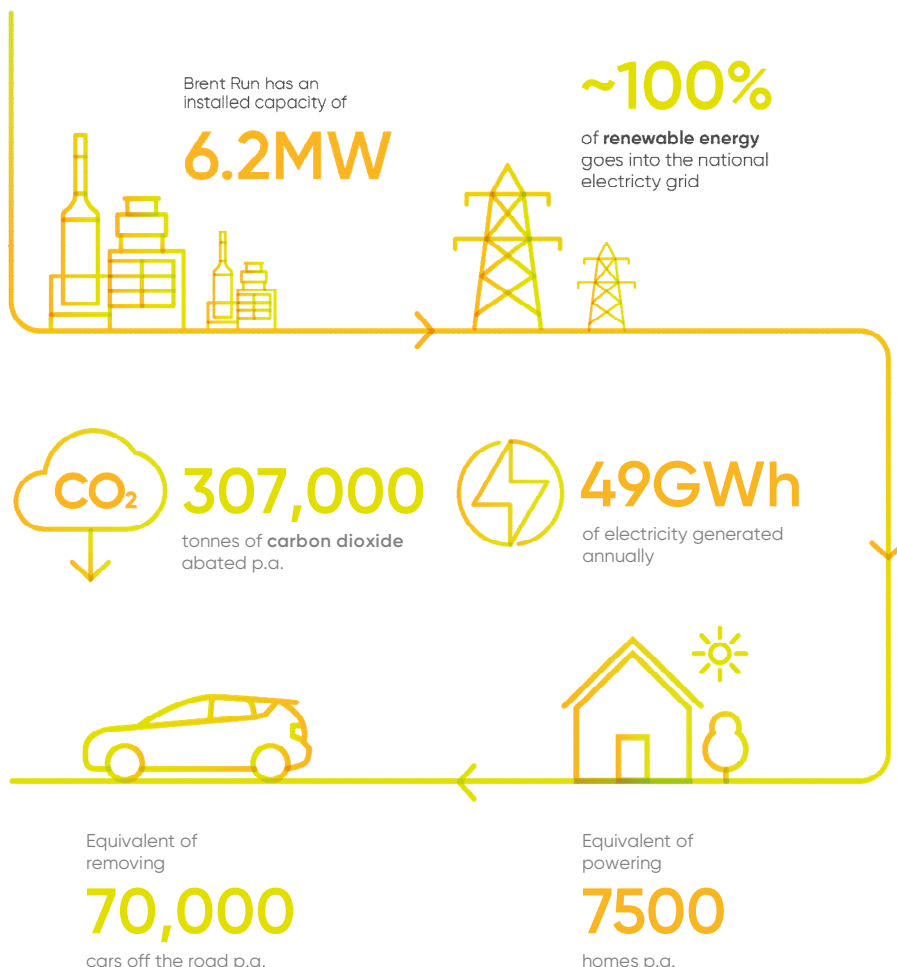
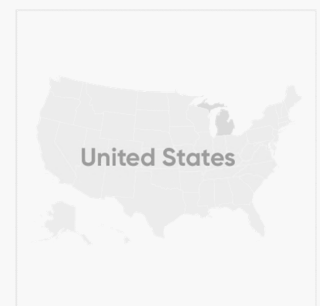
Owner/operator:
EDL

Location:
Montrose, Michigan

Primary fuel:
Landfill gas

Start of operation:
1998

Production:
49GWh p.a.



About the LFG station

Since 1998, the Brent Run Generating Station has used landfill gas from the Brent Run landfill to fuel multiple on-site generator sets. These consist of 860 and 2200 horsepower engines that drive the generator—producing electricity.

A small amount of the energy produced at Brent Run is used to directly supply the generation facility itself, with the majority of the electricity delivered to the grid to supply local homes and businesses.

The power station supplies renewable energy to the equivalent of **7500 local homes and businesses.**



Brent Run Generating Station



860 and 2200 horsepower engines

EDL owns and operates a global portfolio of power stations in Australia, North America and Europe.

We are committed to energy diversity and providing innovative, sustainable solutions to meet and exceed customer needs.



Renewables



LNG/CNG



Waste coal
mine gas



Landfill
gas



Remote
energy

A world of
new energy

Head office
Waterfront Place
Level 6, 1 Eagle Street
Brisbane QLD 4000 Australia

+61 7 3275 5555
enquiries@edlenergy.com
edlenergy.com

Our offices
Australia
North America
Europe