



Appin and Tower Power Stations

EDL has pioneered the collection and combustion of waste coal mine gas (WCMG), an environmentally damaging greenhouse gas (GHG), at our 81.4MW Appin and Tower Power Stations.

At a glance

Power station names:
Appin and Tower Power Stations

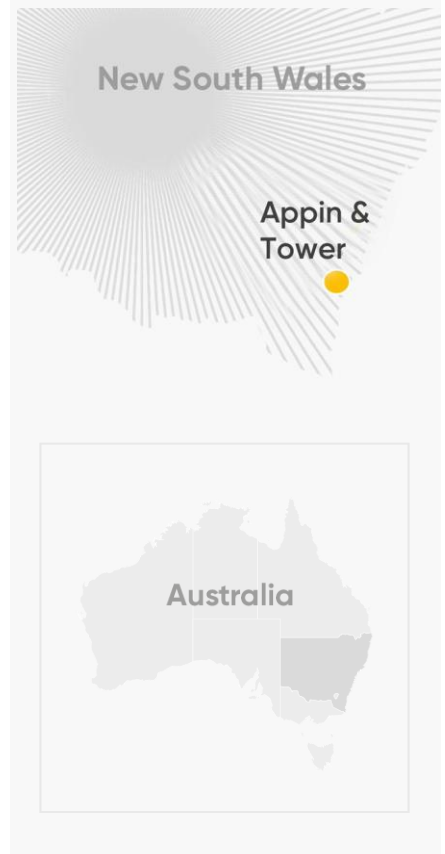
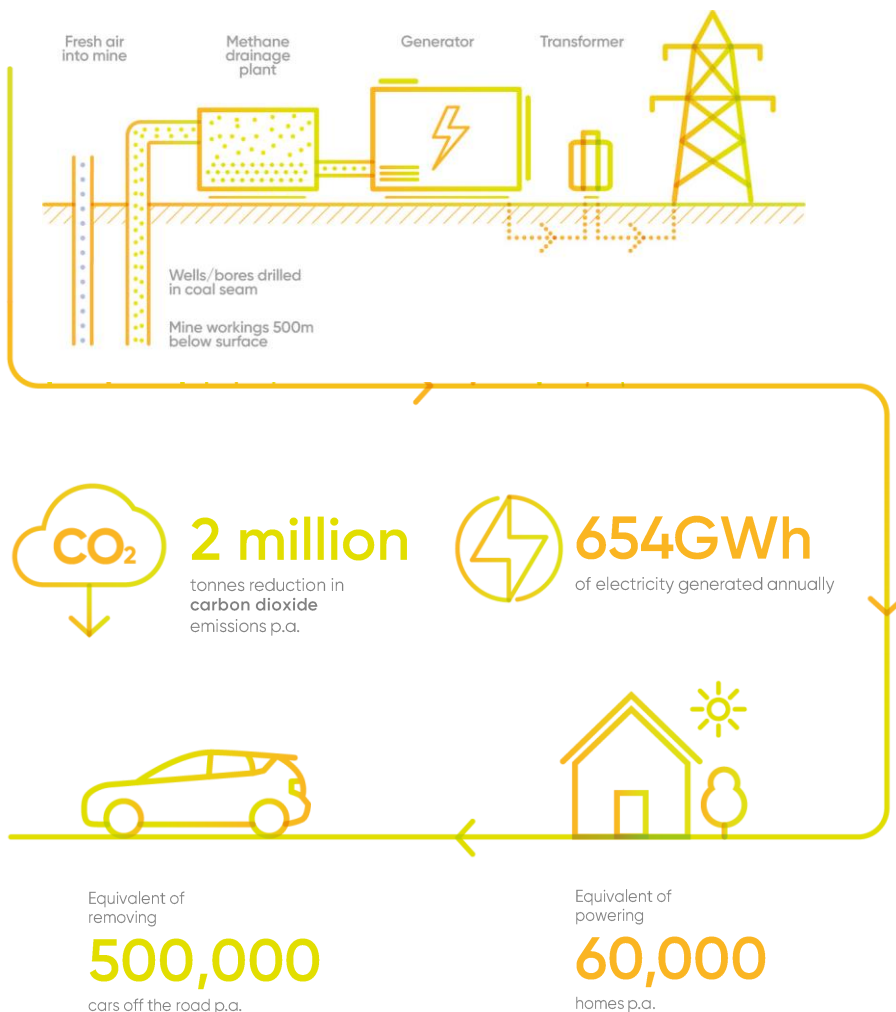
Owner/operator:
EDL

Customer:
South32

Location:
75km south of Sydney, NSW, Australia

Primary fuel:
Waste coal mine gas (WCMG)

Start of operation:
1996



About the power stations

In a world first, EDL developed the largest WCMG power station that captured drained WCMG and also directly used a portion of the methane present as combustion air in the generator sets, further reducing the mine's greenhouse gas (GHG) emissions.

WCMG is a naturally occurring gas that is often released in large amounts during coal mining. Fugitive emissions from coal mines account for about 5% of Australia's GHG emissions. Further, these gases pose a major safety hazard in underground mines.

At South32 Illawarra Coal's Appin and Tower mines located at the southern coal fields in NSW, EDL is applying our expertise in low calorific fuels to capture and combust WCMG, which is 25 times more damaging to the environment than carbon dioxide.

The power stations are capable of generating approximately **654 gigawatt hours (GWh)** of electricity annually, which is enough to power approximately **60,000 homes**.



Appin Power Station



Tower Power Station

EDL owns and operates a global portfolio of power stations in Australia, North America and Europe.

We are committed to energy diversity and providing innovative, sustainable solutions to meet and exceed customer needs.



Renewables



LNG/CNG



Waste coal mine gas



Landfill gas



Remote energy