



# Wonthaggi Wind Farm

EDL owns and operates the Wonthaggi Wind Farm, located 3km west of Wonthaggi within the Bass Coast Shire in Victoria, capturing wind energy using six 2MW turbines with a total capacity of 12MW.

## At a glance

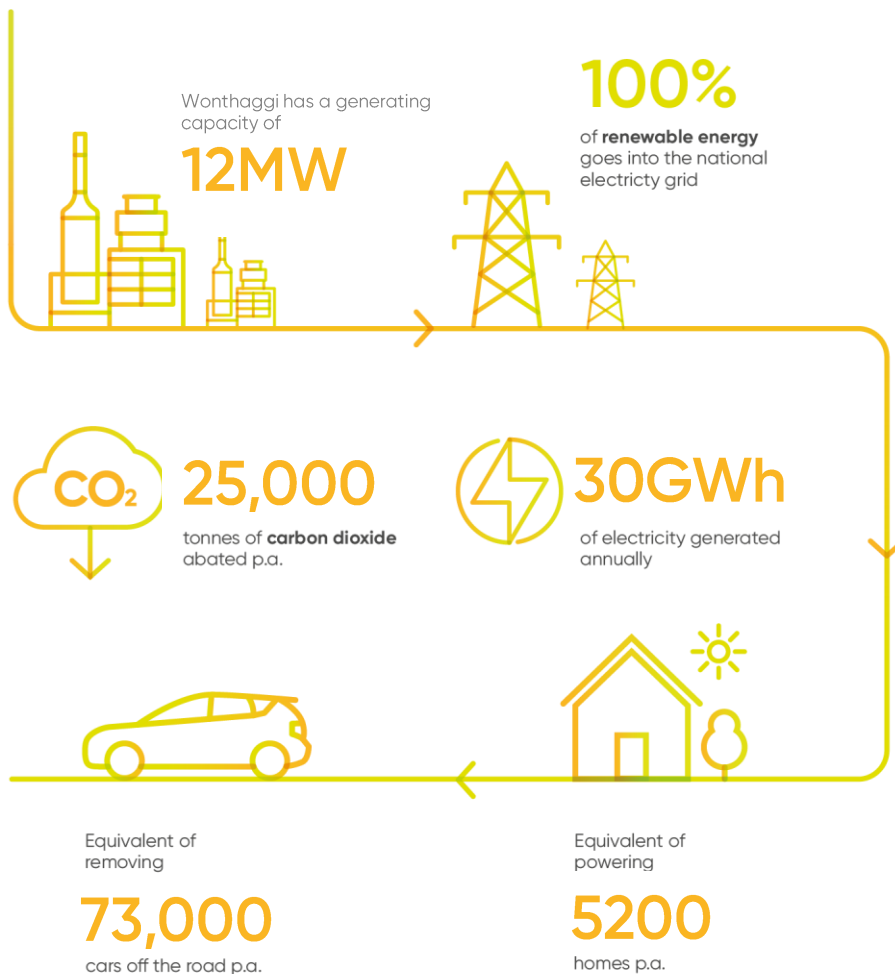
**Project name:**  
Wonthaggi Wind Farm

**Owner/operator:**  
EDL

**Location:**  
Wonthaggi, VIC, Australia

**Primary fuel:**  
Wind

**Start of operation:**  
2005



## About the wind farm

The site was first identified as a potential wind farm due to its strong coastal wind resource, proximity to the electricity grid and relative distance to existing houses.

Built in 2005, the wind farm infrastructure takes up less than 1% of the land area on a single property used primarily for cattle grazing.

Each of Senvion's MM82 Wind Energy Converters (WECs) have a hub height of 69 metres and a rotor diameter of 82 metres. The wind farm produces enough energy to power 5200 households.

To ensure the turbines are operating at peak performance, local service technicians regularly monitor and service the turbines.



Wonthaggi Wind Farm

The power station is capable of generating approximately **30 gigawatt hours (GWh)** of electricity annually, which is enough to power approximately **5200 homes**.

EDL owns and operates a global portfolio of power stations in Australia, North America and Europe.

We are committed to energy diversity and providing innovative, sustainable solutions to meet and exceed customer needs.



Renewables



LNG/CNG



Waste coal mine gas



Landfill gas



Remote energy